

THE
MANNA
INSTITUTE

RFP
Information
Session

Wednesday Feb. 17, 2021

11AM-12 Noon EST

About the MANNA Institute

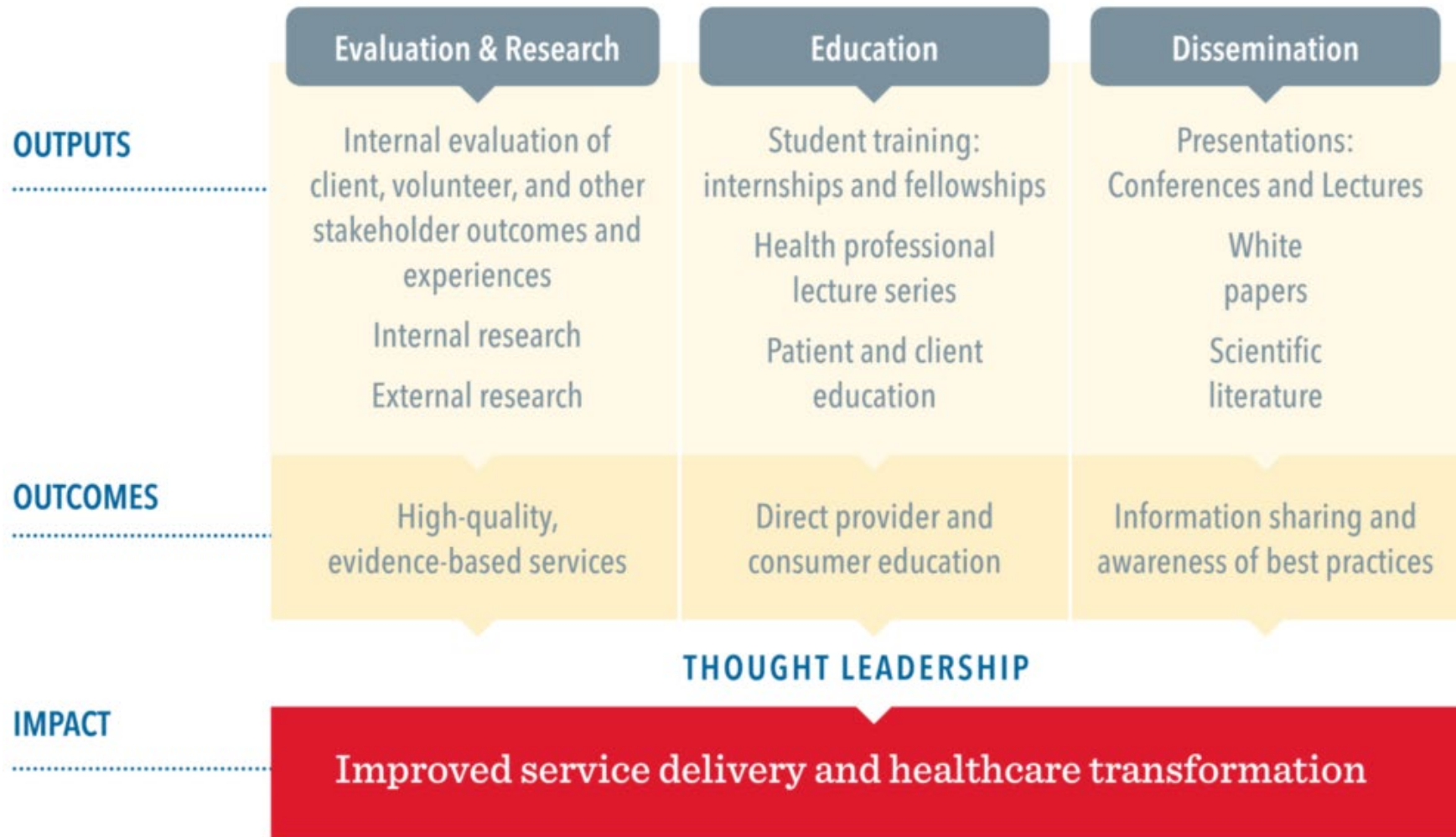
Mission

The MANNA Institute explores the impact of nutrition on health for people with serious illnesses. We lead research and evaluation initiatives, educate healthcare practitioners and consumers, and share findings and best practices for improved service delivery and healthcare transformation.

Staff

Jule Anne Henstenburg, PhD, RDN, LDN, FAND
Director of Research and Evaluation

Adrian Glass
Program Administrator



Request for Proposal (RFP)

Measuring the Impact of MANNA's Medically Tailored Meal Program in Patients with a Non-terminal Cancer Diagnosis

Total Awards

- A maximum of three (3) pilot grants of up to \$50,000 will be awarded

Purpose

- To measure the impact of MANNA's medically tailored meal program and nutrition counseling services on a defined population of patients who each have a non-terminal cancer diagnosis; and
- To identify appropriate outcomes and potential evaluation tools that can be used to build a robust clinical trial protocol.

Research Question

What is the effect of MANNA's program of medically tailored meals and nutrition counseling on health outcomes and healthcare utilization/costs in patients with non-terminal cancer?

Potential outcomes

- treatment adherence
- food and nutrient intake
- nutritional status including clinical biomarkers
- physical health and/or function
- emotional health
- quality of life
- healthcare costs

Study Design

- Patient population
 - Non-terminal cancer diagnosis
 - Not restricted to any type of cancer
 - Must have good chance of extended survivorship
- Methodology
 - May be experimental or observational

Expected Deliverables

- Quarterly reports
- Monthly phone calls
- Final written report
- Appropriate recognition of the MANNA Institute in any publishing opportunities

Eligibility Criteria

- Applicants should be healthcare professionals or researchers affiliated with organizations that have experience treating patients with cancer and providing nutrition support for this population
- Unaffiliated individuals **are not** eligible to apply
- Proposed patient population must be within MANNA's service area. See service area at <https://mannapa.org/services/where-we-serve/>

Application Instructions

Submit full proposal by **5pm EST Wednesday, March 31, 2021**

Abstract:	Proposal Summary
Section 1	Research goals and objectives
Section 2	Research methodology
Section 3	Analysis plan
Section 4	Detailed timeline of research activities
Section 5	Available resources and partners
Section 6	Identifiable obstacles
Section 7	Detailed budget
Section 8	Curriculum vitae of principal investigator and research staff

Proposal Evaluation Considerations

- Rationale for study of the proposed cancer population
- Strategies for successful recruitment and retention of participants
- Presence of any preliminary data including that available from chart reviews
- Research design methodology and feasibility of project timeline
- Experience of the research team, organizational capabilities, and project budget

Questions & Answers

FAQs and webinar recording will be shared on our website

<https://mannapa.org/mannainstitute/request-for-proposals/>

Contact us with additional questions

Jule Anne Henstenburg
Jhenstenburg@mannapa.org
215-496-2662 x122

Adrian Glass
Aglass@mannapa.org
215-496-2662 x121